

# Expanded Function Dental Auxiliary (EFDA) Scholarship

## Purpose:

- Increase access to restorative care dental health care in Washington.
- Helps recruit and retain providers in high need communities in Washington State.

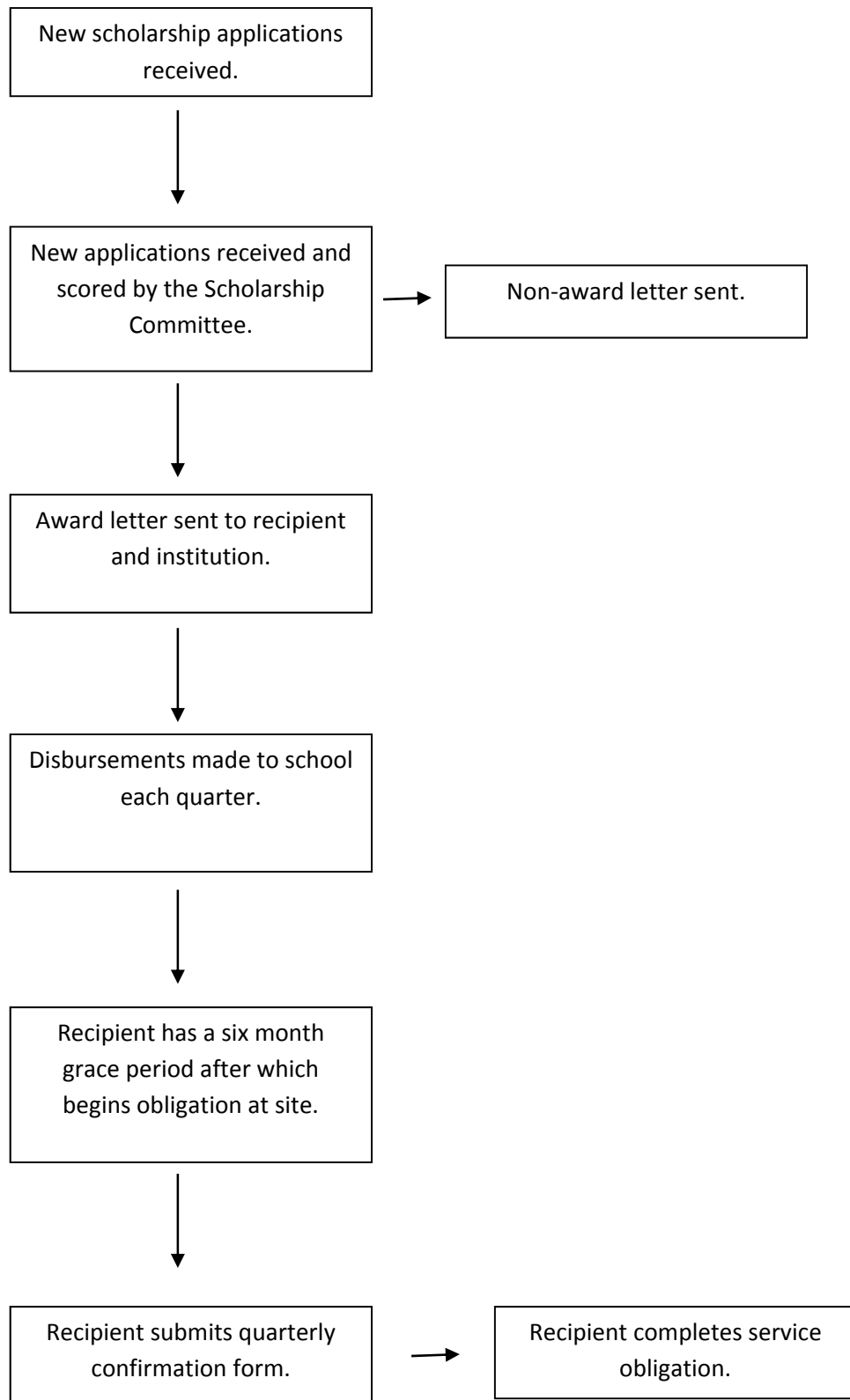
## Eligible Candidates:

- Dental Assistants who meet the requirements set by the state: Pathway I or Pathway II.
- Dental Assistants who are currently working for or recommended by a community or public dental health clinic.

## Funds:

- Applications for scholarships are available, please apply now.

## Scholarship Award Schematic:



## Default:

- failure to complete their course
- do not obtain a license
- do not fulfill the service obligation (one year of employment service to recommending community or public dental health clinic post graduation and obtaining licensure)

Must pay back all funds disbursed plus 8% interest.

## Application Process:

- Obtain application and recommendation letter documents from website: [www.efdacentral.net](http://www.efdacentral.net).
- Complete application and return it by deadline with community or public health clinic recommendation.
- Apply to EFDA program and follow all application procedures and be accepted into the program.
- Contact program assistant with award letter and enroll.